

FUELING AMBITION, BUILDING SUCCESS  
EMPOWERING YOUR VISION

**birlanu**  
AEROCON

BUILD YOUR  
**WORLD**

# CONTENTS

1.	Who We Are .....	2-3
2.	Brand Story .....	4-5
3.	Perfect Partnership .....	6-7
4.	Category Introduction .....	8-11
5.	Products .....	12-31
	5.1 BirlaNu Aerocon AAC Blocks .....	12-15
	5.2 BirlaNu Aerocon Block Jointing Mortar .....	16
	5.3 BirlaNu Aerocon Designer Boards & Planks .....	17-19
	5.4 BirlaNu Aerocon Panels .....	20-25
	5.8 BirlaNu Aerocon Fiber Cement Board .....	26-29
	5.10 BirlaNu Aerocon Panel Jointing Compound .....	30-31
6.	Projects .....	32-36
7.	Awards and Accreditations .....	37
8.	Comprehensive Solutions .....	38-39
9.	Get In Touch .....	40-41



# WHO WE ARE

BirlaNu (formerly HIL Limited), part of the multibillion-dollar CKA Birla Group, is a home and building products and services company.

We serve homeowners, builders, and designers with sustainable, innovative solutions across pipes, construction chemicals, putty, roofs, walls, and floors, featuring brands like BirlaNu Leakproof Pipes, BirlaNu Construction Chemicals, BirlaNu TruColour Putty, Charminar, BirlaNu Aerocon, and Parador.

With 32 manufacturing plants in India, Germany, and Austria, innovation centers in India and Germany, and a market presence in 80+ countries, we adhere to the highest global quality standards, holding certifications such as GreenPro, IGBC, PEFC, Blue Angel, and EPD. Our products are integral to commercial, healthcare, hospitality, residential, and infrastructure projects worldwide.

Powered by over 5,000 employees and a strong partner ecosystem, BirlaNu is ranked 12th in India's Best Companies to Work For by Great Place to Work® and has been recognised with accolades such as Iconic Brand, Asia's Most Trusted Brand, and Super Brand awards.

# BRAND STORY

Since 1946, we've been on a journey of continuous evolution and today, we are proud to announce a new chapter in our legacy: HIL is now BirlaNu.

BirlaNu is inspired by the people we serve and driven by a passion for continuous growth. Rooted in connection, creativity and sustainability, we empower homeowners, builders and designers to bring a vision to life, crafting innovative buildings and structures that stand the test of time.

As the world evolves, we remain committed to shaping spaces where life unfolds and inspiring beautiful, lasting design with our customers at the heart of everything we do.

BirlaNu isn't just a name, It is a reflection of our purpose and promise to be the partner you trust in building the future.



# PERFECT PARTNERSHIP

## Service

From vision to execution,  
partnering with you at every stage.

## Sustainability

Ethically sourced, waste-conscious  
and green-powered.

## Product Excellence

Uncompromising quality and  
reliability in every product.

## Global Presence

Present in 80 countries, with 32 plants across  
India, Germany and Austria.

## Extensive Portfolio

Complete solutions across pipes,  
construction chemicals, putty, roofs, walls and  
floors.

## Innovative Solutions

Where technology meets brilliance,  
creating the future.

# birlanu

## AEROCON

BirlaNu Aerocon delivers a versatile range of nature-positive, beautiful wall solutions that combine strength, style, and sustainability. With AAC blocks, panels, fiber cement boards, designer boards & planks, and panel jointing compounds, each product is designed to meet the evolving demands of contemporary construction while ensuring a perfect balance of form and function.

Engineered for efficiency and durability, these materials enable faster execution, superior thermal and acoustic performance and a reduced environmental footprint compared to traditional methods. From robust structures to refined interiors, BirlaNu Aerocon offers solutions that enhance both functionality and aesthetics, ensuring smarter and more sustainable building practices that every builder, architect and designer can rely on to bring their vision to life with precision and efficiency. With faster installation and a lower environmental footprint than traditional materials, we help you build better, smarter and greener.

**BRAND PROMISE:** Building smarter, stronger and sustainable spaces

**BRAND ADVANTAGE:**

- Design flexibility
- Elevating Design
- Superior Aesthetics
- Energy Efficiency



**AAC Blocks:** Lightweight with excellent thermal and acoustic insulation, our Autoclaved Aerated Concrete (AAC) blocks are crafted from fly ash, cement, lime and an aeration agent, to enable faster building while reducing cement and steel consumption. Compliant with IS 2185 Part 3 standards, they ensure consistent quality.

**Panels:** These are innovatively designed: two fibre-reinforced cement facing sheets with a lightweight concrete core. Ready to install, they offer unmatched strength, durability and efficiency for walls. These panels are a smart, sustainable choice for building partitions, prefab structures, mezzanine flooring, cladding, boundary walls and fire separation.

**Designer Boards & Planks:** These redefine surface aesthetics by combining durability with design flexibility, required for high performance spaces. Engineered for both interiors and exteriors, these eco-friendly boards offer a natural grainy texture and undergo high-pressure steam curing-autoclaving for enhanced visual appeal, dimensional stability and long-term resistance to weather, termites and water and are available in both standard cement and designer series finishes.





# birlanu | AAC AEROCON BLOCKS

BirlaNu Aerocon AAC Blocks crafted from fly ash, cement, lime and an aeration agent, speed installation, cut labour costs and meet IS 2185 Part 3 for sustainable building.

## KEY FEATURES:

**Energy Savings:** Insulation efficiency cuts energy consumption by 15% –20%, reducing heating and cooling costs.

**Superior Acoustic Insulation:** Advanced soundproofing reduces external noise for a peaceful indoor environment.

**Thermal Insulation:** Ensures comfortable, cooler living spaces.

**Reduced Construction Costs:** Streamlined installation saves time, materials, and labour expenses.

**Long-Lasting Durability:** Resistant to termites and mould, protecting against pests and decay.

**Precision Engineering:** State-of-the-art German technology ensures superior product quality and durability.

**Earth-First:** Made from recycled materials with zero wastage.

**Faster, Smarter Construction:** Build up to 30% faster with lightweight, easy-to-handle blocks that simplify installation.

**Superior Durability & Safety:** Fire-resistant and non-combustible.

## ENHANCED PERFORMANCE:

**Cost-Effective Savings:** Reduce building foundation loads by up to 30%, save 18% on steel, and 12% on cement.

# TECHNICAL SPECIFICATION

Parameter	Unit	Value
Face Size	mm	600X200
Thickness*	mm	100/ 125/ 150/ 200/ 230/ 300
Compressive Strength** (Min)	N/mm <sup>2</sup>	≥4
Block Dry Density	Kg/m <sup>3</sup>	551-650
Thermal Conductivity	W/m-K	≤0.24
Sound Reduction***	db	37-42
Fire Resistance-load Bearing (200mm Thicknees)	Hrs	4
Non Load Bearing (100mm Thickness)	Hrs	4#
Drying Shrinkage	%	≤0.05% for grade 1

\*Conditions apply  
\*Other Thickness Can be Given on Request. \*\*Confirming to IS 2185 (part 3),1995.  
##Face Size 600X250 is available at Jhajjar Plant ## Face Size Of 600X240 is Available at Golan Plant,  
\*\*\* Depends on the thickness.  
Spectifications mentioned are as per IS 2185 – Part III, 1984.





**Block Jointing Mortar** is an eco-friendly, high performance solution designed with Superbond technology to deliver exceptional strength, durability and water resistance for block and brick jointing.

Ideal for joining AAC blocks, concrete blocks, and fly ash bricks in residential, commercial, and industrial construction, it offers strong and water-resistant joints with a smooth finish.

- KEY FEATURES:**
- Excellent Bonding
  - Thin Set Mortar
  - High Strength
  - No Curing Required
  - Smooth Application
  - Water Resistant Finish

**SKU:** 40 kg pack

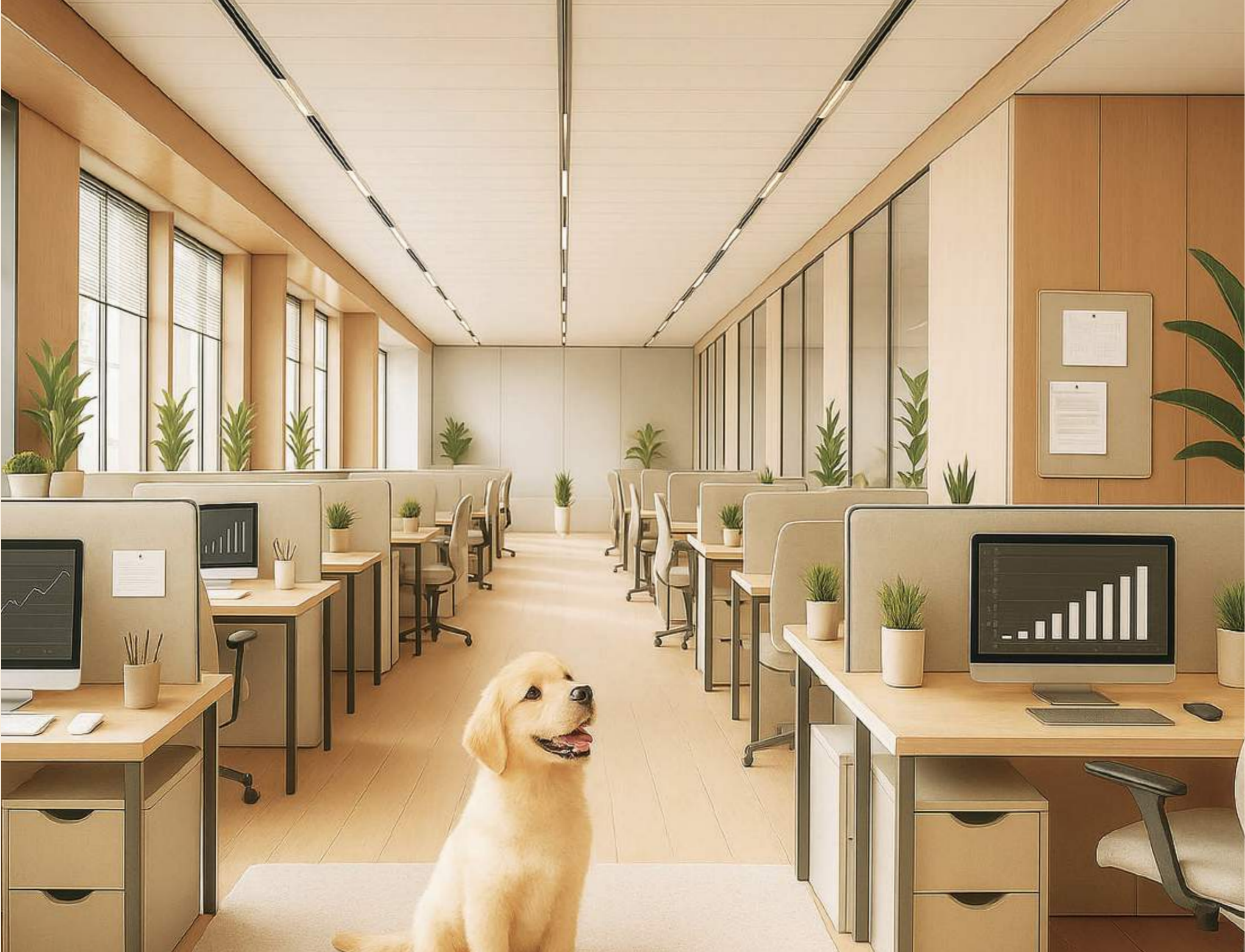


**BirlaNu Aerocon Designer Boards & Planks:** Featuring a pre-textured wooden finish, these termite and water resistant solutions provide versatile, eco-conscious design for both interiors and exteriors.

- KEY FEATURES:**
- Termite & weather protection:** Shields against pests and harsh environments.
  - Moisture resistance:** Prevents water related damage.
  - Dimensional stability:** Retains shape over time.
  - Design forward:** A curated, trend-based collection.

## TECHNICAL SPECIFICATIONS

Parameter	Value
Adhesion Test (Cross hatch)	100%
Water Resistance	48 hrs (blister recovery overnight)
Wet Scrub Resistance	100 Cycles
Fire Resistance Properties	Designer Planks are a non- combustible material and qualify for resistance to fire as per BS-476, Part 5, 6, 7
Standard Weight	7.2Kg/m <sup>2</sup> for 6mm
Water Permeability	< 1%
Thermal Conductivity	0.18W/m-K
Screw Holding Capacity on face	190kg
Nail Holding Capacity on face	120kg





# **birlanu** | **PANELS** **AEROCON**

**BirlaNu Aerocon Panels:** With a fiber-reinforced cement core, IGBC Griha & Greenpro certification, our panels offer robust strength and durability for walls, partitions, and prefab structures.

**KEY FEATURES:**

- Space efficient design:** Thinner walls maximise usable floor area.
- Lightweight construction:** Simplifies handling and reduces structural load.
- Enhanced safety:** Fire and termite resistant.
- Moisture protection:** Water resistant, prevents bacterial and fungal growth.
- Sound insulation & fire resistance:** Improves indoor comfort.
- Cost efficiency:** Lightweight design lowers structural expenses by up to 20%.
- Time efficiency:** Installation is 10 to 20 times faster than traditional methods.
- Labour efficiency:** Pre cured and ready to use, eliminating on site curing.
- Reusability:** Tongue and groove joints allow easy disassembly and reuse.
- Design assistance:** Comprehensive BOQ support and tailored solutions.



# TECHNICAL SPECIFICATIONS

PROPERTIES	UNIT	TEST METHOD	THICKNESS		
			50mm	75mm	100mm
Nominal Weight	Kg/m <sup>2</sup>	-	42	58	70
Apparent Density	Kg/m <sup>3</sup>	IS 2380 Part 3	700 - 900		
Axial Compression load/meter width	KN/m	IS 17908 : 2023	100	125	125
Bending test (4 Point UDL) Uniformly Distributed Load - 2.9m span	N/m <sup>2</sup>	IS 17908 : 2023	1000	1250	1500
Flexural Strength (Modulus of Rupture)	Kg/cm <sup>2</sup>	IS 2380 Part 4	50	40	30
Thermal Conductivity	W/m-K	IS:3346 (for 50mm & 75mm) BS :4370 Part 2 (for 100 mm)	0.18	0.17	0.19
Sound Transmission Coefficient	dB	IS:9901 Part 1 -198 (for 50mm & 75mm) IS:9901 Part III – 19 (for 100 mm)	38 <sup>@</sup>	40 <sup>@</sup>	43
Fire Rating	-	BS:476 Part 20 & 22 (for 50mm & 75mm) BS:476 Part 20 -22 (for 100mm)	105*	180 <sup>#</sup>	240 <sup>#</sup>
Surface Spread of Flame	-	BS:476 Part 7 – 1971 (for 50mm & 75mm) BS:476 Part 20 -22 (for 100mm)	Class 1*		-
Fire Propagation Index (i)	-	BS:476 Part 6 – 1981 (for 50mm & 75mm)	3*		-
Ignitibility	-	BS 476 Part 5 – 1968 (for 50mm & 75mm)	Class P* (Not Easily Ignit-able)		-
Standard Size	-	Length - 2.4 m, 2.7 m,3.0m	Width - 600mm		



Note: The following specifications are based on typical test results of BirlaNu Aerocon Panels with Non Asbestos Fiber Cement Board (conforming IS 14862: 2000 (Type A).  
Note: Mechanical Properties will vary due to change in moisture content in Panels .  
\*As per test result of CBRI, Roorkie. @As per test results of Prasara Bharti, New Delhi.  
#As per result of Spectro Lab Delhi.

Note: The above specifications are based on typical test results of BirlaNu Aerocon Panels with Non-Asbestos Fiber Cement (IS 14862 Type A).  
Note: Mechanical properties will vary due to change in moisture content in Panels.  
\*As per test results of CBRI, Roorkie. @As per test results of Prasara Bharati, New Delhi.  
#As per the results of Spectro Lab Delhi.

# APPLICATIONS



Prefabricated Structure



Partition Wall



Server Room



Cafeteria



**BirlaNu Aerocon Fiber Cement Boards:** Crafted from fly ash, cellulose fibers and fire resistant fillers, BirlaNu Aerocon Fiber Cement Boards undergo high pressure steam autoclaving for strength and stability. A superior alternative to wood, they are versatile and available in various sizes for endless design possibilities.

**KEY FEATURES:**

- Dimensional stability:** Maintains shape under varying conditions.
- Sound insulation:** Reduces noise transfer for quieter spaces.
- Thermal insulation:** Helps regulate temperature and cut energy use.
- Fire resistance:** Slows flame spread for added safety.
- Eco friendly:** Made from sustainable materials for green building.

# TECHNICAL SPECIFICATIONS

Parameter	Value
Standard Weight for 6mm	8.25kg/m <sup>2</sup>
Free moisture at equilibrium (at 24°C & 50% RH)	5-11%
Dry Shrinkage (moisture movement )	<2.5mm/mtr
Water absorption	<40%
Thermal Conductivity****	0.2W/m-K
Ignitability (BS - 476, part -5)(not easily Ignitable )*	Class P
Fire Propagation index (BS 476, Part - 6)*	3.7
Suface spread of flame (BS-476 part-7)*	Class 1 (Best)
Screw Holding Capacity on face	220kg
Nail Holding Capacity of face	180kg
Bending strength ( modulus of rupture/min) at Equilibrium condition	10 Mpa
Heat/ Rain test	Pass
Warm water test	Pass
Termite Test	Pass
Sound Transmission co-efficient for 6mm***	34dB

\*Conditions apply  
All sheets come with dimensional tolerances as per IS 14862. Customer specific tolerances can be provided with special cutting.  
Edges of sheets are normally available only as square, recessed edges can also be provided. Recommended for external applications with appropriate painting system only.  
\*As per test results of CBRI-Roorkee.  
\*\*AS per test results of Spectro Lab.  
\*\*\*As per Prasar Bharati & National Physical Laboratories.  
\*\*\*\*As per test results of IIT, Mumbai.



# APPLICATIONS



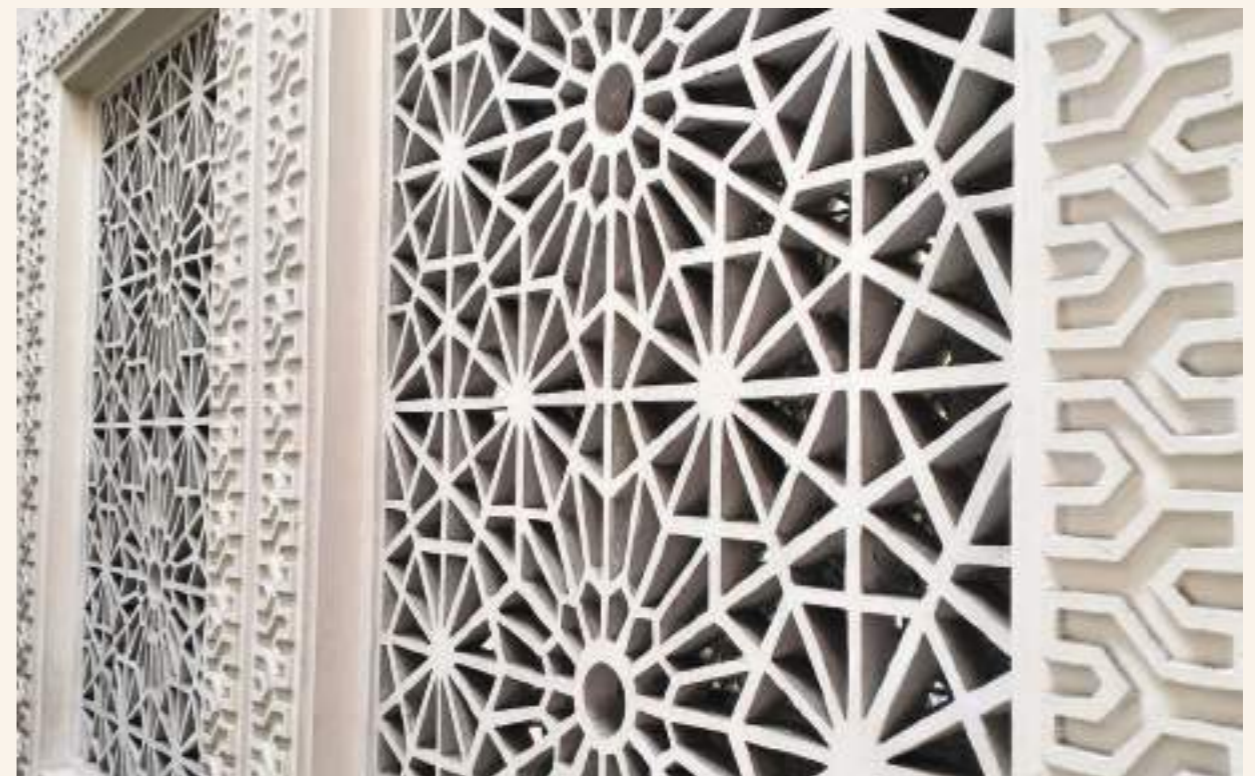
False Ceiling



Partition



Fixed Furniture



Computer Numerical Control Cutting

**birla****nu**  
**AEROCON**

**PANEL  
JOINTING  
COMPOUND**

BirlaNu Aerocon Panel Jointing Compound is a ready to use dry mix designed for seamless panel jointing. This cement based blend of cement, polymers, fibers and fillers effectively seals grooves and levels recessed areas, creating a smooth surface for skimming and painting. Suitable for residential and commercial projects, it enhances both new and existing panels.

**KEY FEATURES:**

- Strong adhesion:** Securely bonds panels for lasting stability.
- Fast jointing:** Accelerates construction timelines.
- Seamless finish:** Creates an even surface, ready for painting or decorative treatments.
- Crack resistance:** Prevents cracks for a polished appearance.
- Minimal shrinkage:** Maintains stability during drying.
- Reliable quality:** Ensures consistent performance.
- Effortless application:** Simplifies installation.
- Curing free:** Eliminates the need for curing.
- Minimal waste:** Optimizes material usage, reducing costs.
- Time & cost efficiency:** Lowers labour and material expenses.
- Fire resistance:** Slows flame spread for added safety.



# PROJECTS

S. No.	Departments	Zone	Segment
1	Indian Parliament new Building (Central Vista)	Delhi NCR	Administration
2	Bharat Mandapam - Pragati Maidan	Delhi NCR	Administration
3	Indira Gandhi International Airport, Terminal 3	Delhi NCR	Infra
4	Railway Station	Jodhpur	Infra
5	Airport	Jodhpur	Infra
6	IIT	Jodhpur	Education
7	Kota Railway Station	Kota	Infra
8	AIIMS	J&K	Healthcare
9	IIT	J&K	Education
10	Udhampur Srinagar Baramula Railway Station	J&K	Infra
11	LEH Airport	Ladakh	Infra
12	Chennai International Airport	Chennai	Infra
13	Chennai Metro Rail Project (CMRL)	Chennai	Infre
14	Tamil Nadu Housing Board Govt. Residences	Chennai	Residential
15	Mahatma Gandhi Medical College	Pondicherry	Education
16	Government Medical College, Hyderabad	Hyderabad	Education
17	AIIMS	Hyderabad	Healthcare
18	Police Housing	Hyderabad	Residential
19	Police Commisionerates	Hyderabad	Residential
20	CPWD RBI Project	Mumbai	Administration
21	Cidco, BG Shirke	Mumbai	Administration
22	Mumbai Metro (Line 7)	Mumbai	Infra
23	High Court Advocate General Office	Odisha	Administration
24	Aerocity	Delhi NCR	Infra
25	Apollo Hospital	Delhi NCR	Healthcare

26	Unity The Amaryllis (The tallest tower in Delhi)	Delhi NCR	Residential
27	DLF Downtown	Delhi NCR	Residential
28	M3M Trump Tower	Delhi NCR	Residential
29	Vedanta Ltd	Rajasthan	Oil & Gas
30	HPCL Refinery	Rajasthan	Defence
31	MES Resident Colony	Rajasthan	IT
32	Microsoft Data Center	Chennai	Education
33	SRM University	Chennai	Education
34	Vellore Institute of Technology	Chennai	Residential
35	Appaswamy Clover by the River	Chennai	Healthcare
36	Aravind Eye Hospital	Chennai	Education
37	Narsee Monji Institute of Management Studies	Hyderabad	Education
38	Symbiosis University	Hyderabad	Education
39	RV Institute of Medical Sciences	Hyderabad	Healthcare
40	Yashoda Hospital	Hyderabad	Healthcare
41	Kims Hospital	Hyderabad	Healthcare
42	Apollo Hospitals	Hyderabad	Education
43	Oakridge International School	Hyderabad	Education
44	Delhi Public Shool	Hyderabad	Residential
45	RMZ Nexity	Hyderabad	Education
46	Sattva Knowledge Capital	Hyderabad	Residential
47	Auro Orbit	Hyderabad	Residential
48	Capitaland	Hyderabad	IT
49	Meenakshi Tech Park	Hyderabad	IT
50	Meenakshi Ecopark	Hyderabad	IT
51	Data Centres (Ctrl + S, Microsoft)	Hyderabad	Education
52	Hyderabad Central University	Hyderabad	Residential
53	Lodha Palava	Maharashtra	Residential
54	L&T Prestige Cosmos	Maharashtra	Residential
55	Kalpataru	Maharashtra	Residential

56	Mahindra Life	Maharashtra	Residential
57	Ajmera Realty	Maharashtra	Healthcare
58	Bagwati Hospital	Mumbai	Residential
59	Oberio Skycity	Mumbai	Residential
60	Adityraj Comfort	Mumbai	Residential
61	Runwall Forest	Mumbai	Residential
62	Swastik Group	Mumbai	Residential
63	Neelkanth Construction	Panvel	Commercial
64	K Raheja Corp-Om sai Corporation Gigaplex	Mumbai	Commercial
65	HSBC Worli-K Raheja Corp	Mumbai	Commercial
66	Palava / World Tower / The Park	Mumbai	Residential
67	Kalyan - 2 / Vicino / Mahindra Life Space	Mumbai	Residential
68	Mohan Precious Green	Mumbai	Residential
69	Civic / Palacio , Thanekar Group	Mumbai	Residential
70	One Kalyan / Arham , Ajmera Group	Mumbai	Residential
71	Cloud 36, Gee Cee Venture	Mumbai	Infra
72	Yashnandan Construction (Rajkot International Airport)	Mumbai	Residential
73	Aljamea-tus-Saifiyah	Mumbai	Commercial
74	Tata Animal Center , Sabri Construction	Mumbai	Commercial
75	IITB Research Park by Parnikhar	Mumbai	Residential
76	Skycity	Mumbai	Commercial
77	L & T West Square	Mumbai	IT
78	Nexus Data Center	Mumbai	Education
79	SVKM School	Mumbai	Residential
80	Simina , Bhoomi Group	Mumbai	Infra
81	Quality Buildcon (Metro Project)	Gandhinagar	Residential
82	Naroda Sky	Ahmedabad	Infra
83	High Speed Rail Project	Gandhinagar	Residential
84	Devsasva 9	Ahmedabad	Residential

85	Habitat (Avadh Group)	Surat	Residential
86	Ercol Heights ( Avadha Group)	Surat	Residential
87	Rajhans Infracon	Surat	Residential
88	Rajhans Nutriman	Surat	Residential
89	Aagam Devlopers	Surat	Infra
90	Surat Railway (Girishari Construction)	Surat	Infra
91	Undhana Railway (Bridgh & Roof Construction)	Surat	Residential
92	Avadh Uthopia	Vapi	Residential
93	Vedanata Enterprise	Vapi	Residential
94	Chetan Construction	Vadodara	Residential
95	Avadh Uthopiya Club	Vapi	Education
96	SCB Medical College	Odisha	IT
97	RBI Data Centre	Odisha	Spritual
98	Jagannath Mandir Dharmashala	Puri	Sports
99	Kalinga Stadium	Bhubhaneshwar	Education
100	MG Medical College	Jamshedpur	

S. No.	Departments	Zone
101	SRM Group of Institutions	Chennai
102	Amrita Group of Institutions	Coimbatore
103	Isha Foundation	Coimbatore
104	Tata Electronics (P) Limited - Iphone Factory & Office	Hosur
105	Micron Technology, Semiconductor Plant	Sanand
106	KPR Group of Institutions	Coimbatore
107	(MGM) Mahatma Gandhi University of Medical Science & Tech	Jaipur
108	Centrum Hotel	Lucknow

109	Reach Promotors	Gurgaon
110	Manipal University	Jaipur
111	Navitas Solar	Surat
112	Gharda Chemicals	Ahemdabad
113	Monte Carlo	Ahemdabad
114	Pranav Business park	Hyderabad
115	The Lake Shore Mall	Hyderabad
116	Olectra Greentech	Hyderabad
117	Mall of Noida	Noida
118	World Steet Mall	Greater Noida
119	Gaur City Mall	Greater Noida
120	Aphathum	Noida
121	Ithum 73	Noida
122	The Galleria Mall	Noida
123	MMR 52 Avenue	Noida
124	Lord Krishna Mart	Greater Noida
125	Grandthum Mall	Noida
126	Max Hospital	Delhi
127	DLF The Arbour	Gurgaon
128	DLF Midtown	Gurgaon
129	SG Commercial 37	Gurgaon
130	Golden I	Greater Noida
131	Ace Commercial 132	Noida
132	DLF Arbour	Gurgaon
133	IKEA	Gurgaon
134	CISF Barrack	Jewar

# AWARDS & ACCREDITATIONS





# COMPREHENSIVE SOLUTIONS

BirlaNu brings to life a world of possibilities, offering a complete range of home and building solutions, from pipes and construction chemicals to putty, roofs, walls and floors. Crafted with care and precision, our products are designed to endure, evolve and elevate every space.

Whether it's a cozy home, a soaring commercial complex or a grand project, we blend innovation, sustainability and technology to shape the future of your world.

Explore the art of building with us.

GET IN TOUCH

For Business Enquiries:

1800 425 425 99, [customer.care@birlanu.com](mailto:customer.care@birlanu.com)

[www.birlanu.com](http://www.birlanu.com)

BirlaNu Limited (formerly HIL Limited)

6th Floor, Birla Tower, 25 Barakhamba Road,  
New Delhi - 110001, India

# birlanu

PIPES CONSTRUCTION CHEMICALS PUTTY ROOFS WALLS FLOORS